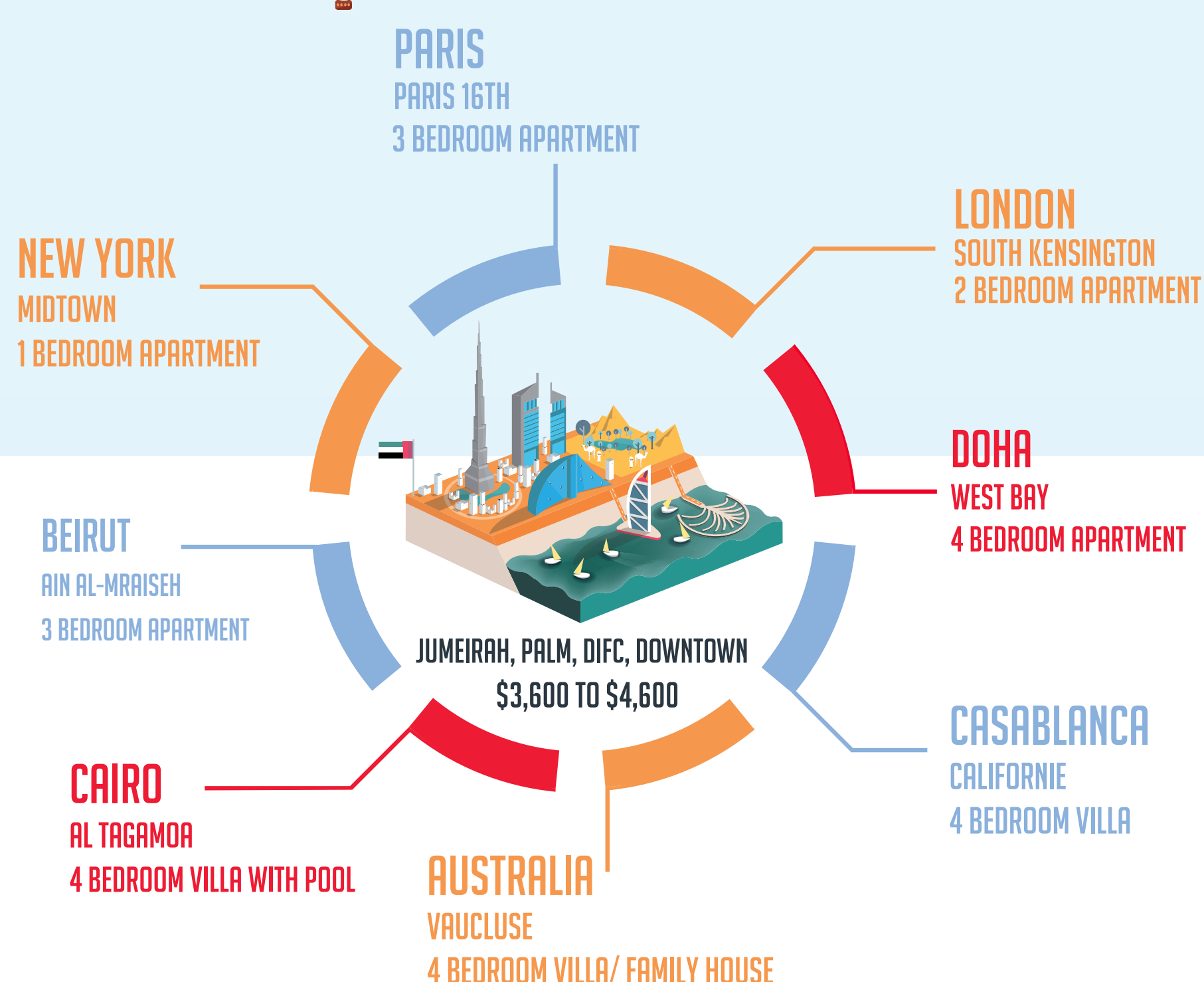
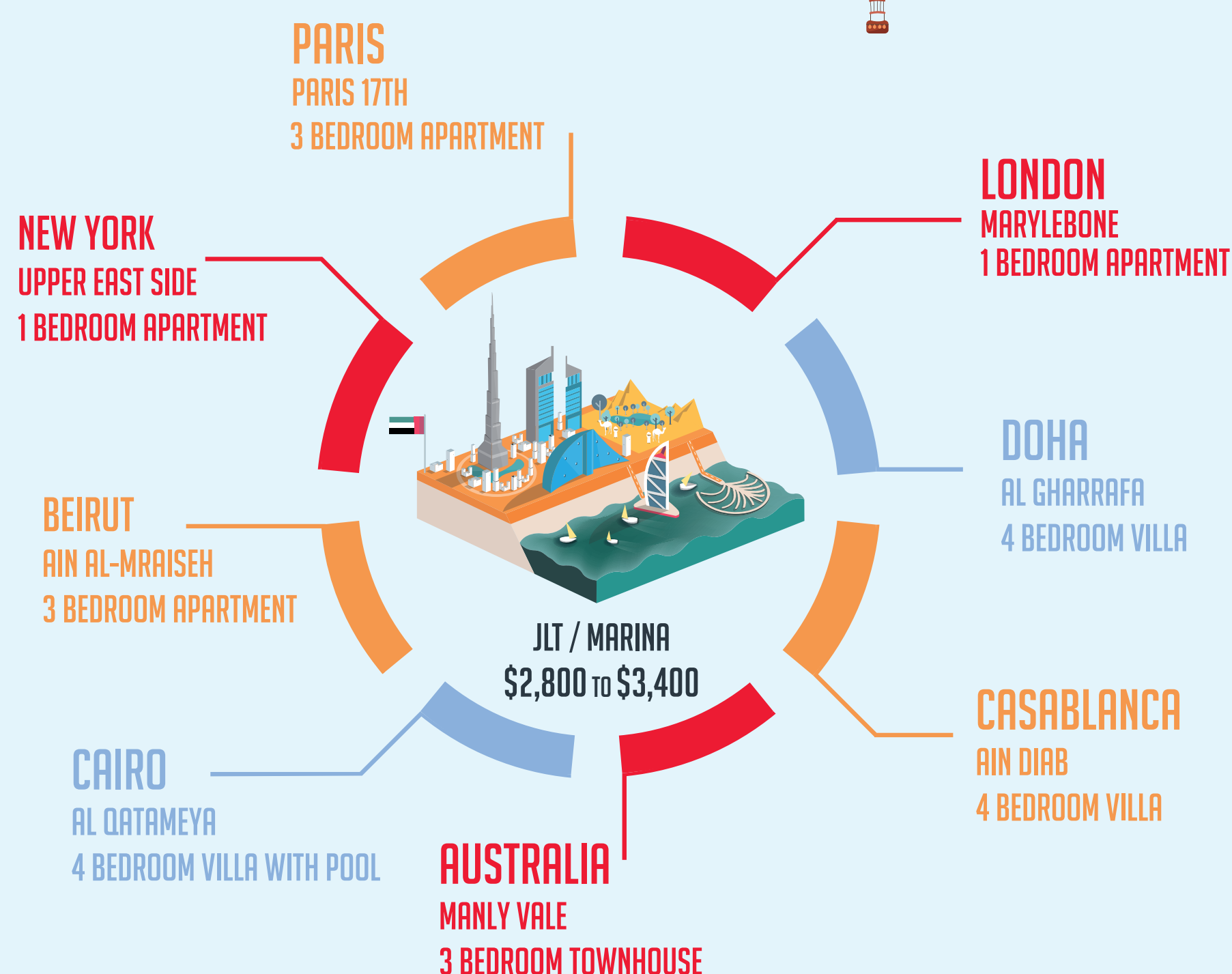
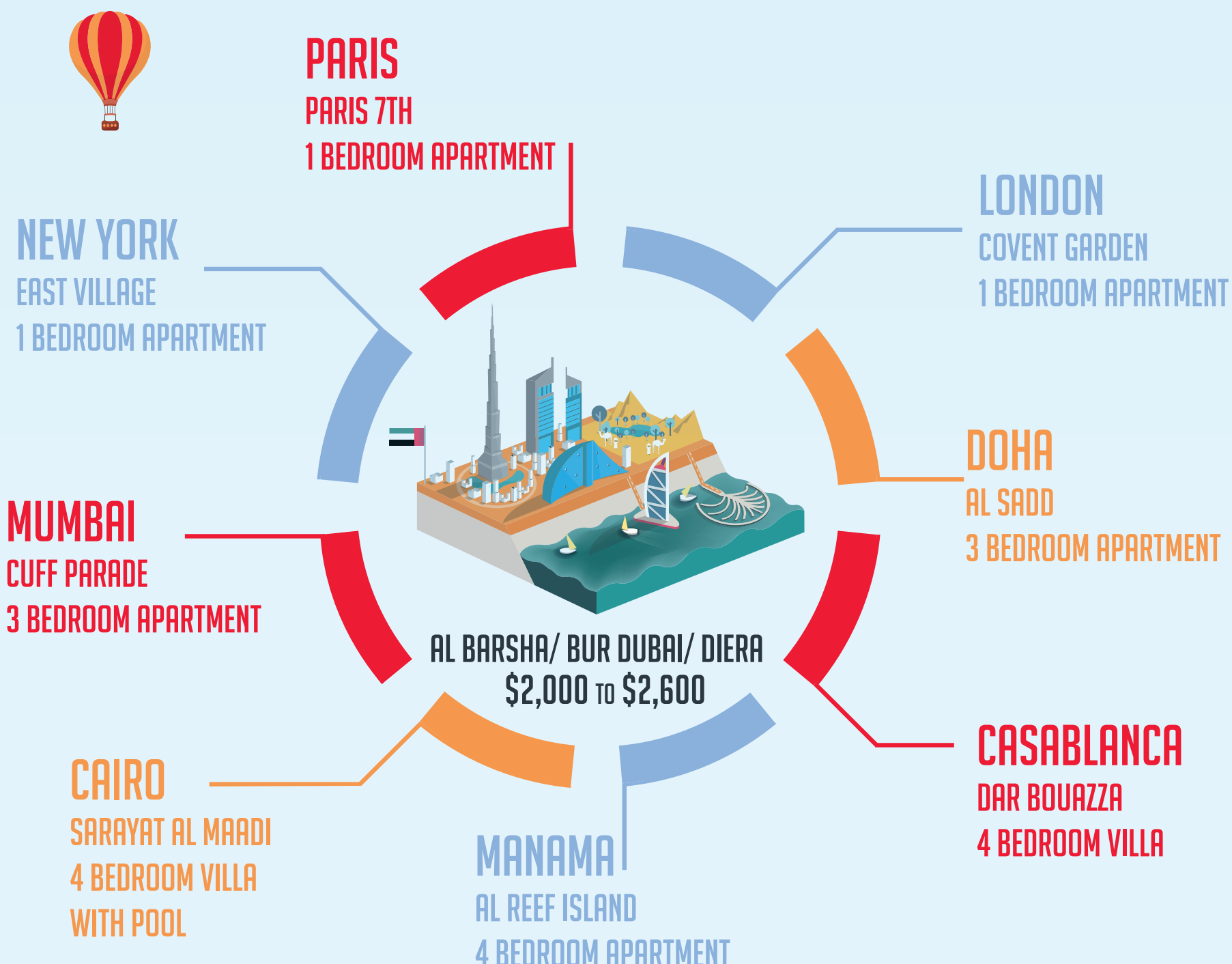


WHAT COULD YOU GET FOR THE PRICE OF A 2 BED IN DUBAI IN OTHER PARTS OF THE WORLD?

HOW DID WE DO IT?

WE CALCULATED THE AVERAGE MEDIAN OF THE MONTHLY SPEND ON RENT ON A 2 BEDROOM APARTMENTS IN DUBAI, PARTICULARLY IN MOST POPULAR AREAS INCLUDING BARSHA, BUR DUBAI, DEIRA, JLT, MARINA, JUMEIRAH, PALM, DIFC AND DOWNTOWN WHICH WERE THERE GROUPED INTO 3 BASED ON THE SIMILAR PRICE RANGE OF THE MONTHLY RENT BETWEEN FEB 06 -DEC 06.



WHAT COULD YOU GET FOR
THE PRICE OF A 2 BED IN DUBAI
IN OTHER PARTS OF THE WORLD?

